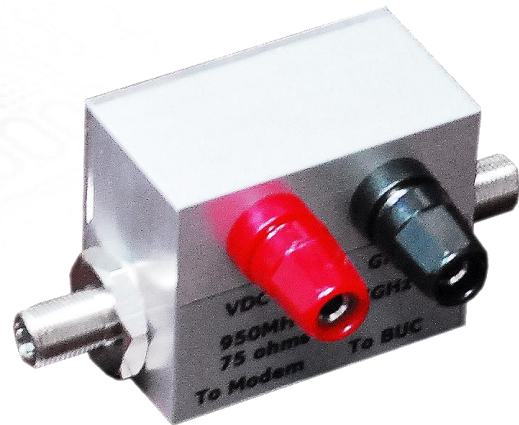




GeoSat Microwave

- Bandwidth 950MHz to 2GHz
- Reference & IF Supplied from Modem
- Up to 6 Amps DC input
- 15 - 60 VDC Power input
- "N" or "F" RF Interface Options
- DC port-Red, Ground port-Black
- 3 Year GeoSat Product Warranty



Bias Tee

Model: GST6ADC



Item	Specification
RF Frequency	950MHz ~ 2GHz
Voltage	15 ~ 60V DC
Current	6 Amps. max.
Insert Loss ▼	
	10 MHz 1.0dB Max.
	950 MHz-1.7GHz 1.0dB Max.
DC Interface	Banana Jack
RF Interface ▼	
	GST6ADCF From Modem and to VSAT : F type
	GST6ADCF From Modem and to VSAT : N type
Impedence ▼	
	F type 75 Ohms
	N type 50 Ohms
Operating Temperature Range	-40 deg C to +55 deg C
Dimensions (Without Connector)	53.1x43.55x21.3mm
Weight	150g. max.